

**Swiss sliding
solutions that
inspire.**

References

A large blue parallelogram is positioned on the left side of the slide, tilted slightly. A smaller red parallelogram is positioned below it, also tilted, creating a sense of depth and movement.

**Transforming visions into rooms...
Let yourself be inspired!**

Sliding hardware systems with Swiss precision

Globally represented in our subsidiaries worldwide



- Leading Manufacturer of premium sliding solutions
 - on buildings, in buildings, on furniture
- More than 50 years of manufacturing competence and experience
- Owner-managed family company with around 240 employees
- Sales of approx. 70 million Swiss francs
- Export share: 80%

Living in more beautiful surroundings

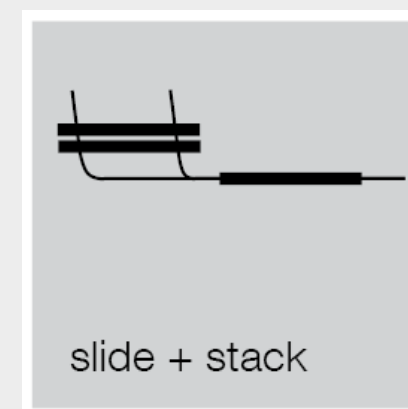
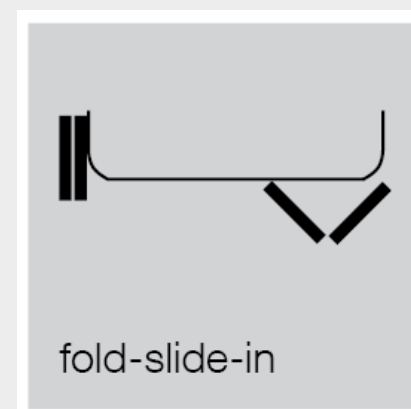
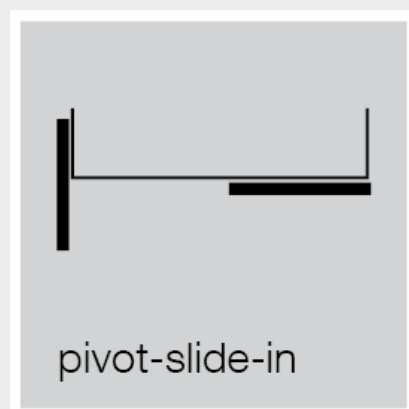
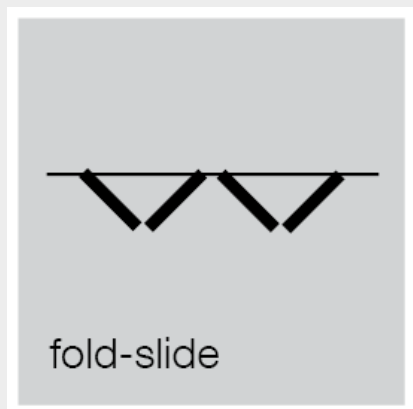
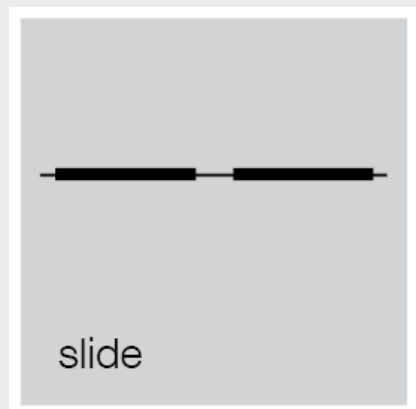
Sliding provides many advantages



Sliding makes top-class architecture and innovative design possible. It puts the focus on the aesthetics and the quality of a building, a room or a furniture item. Its functionality may be invisible, but its functional effect is outstanding.

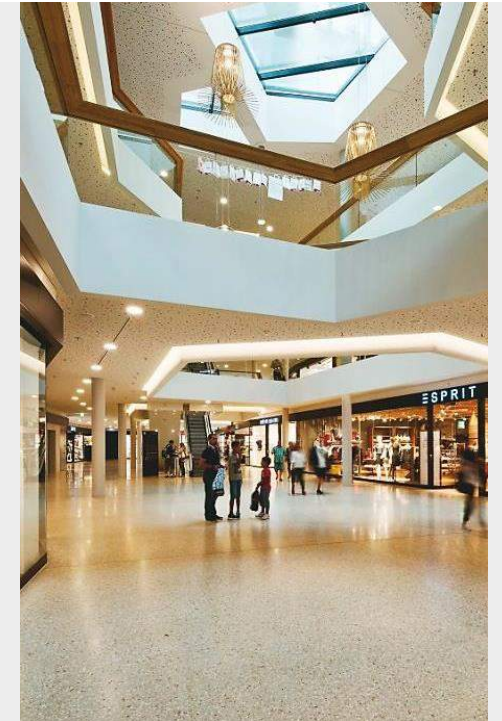
We put things in motion

Global technology leader for various sliding hardware systems



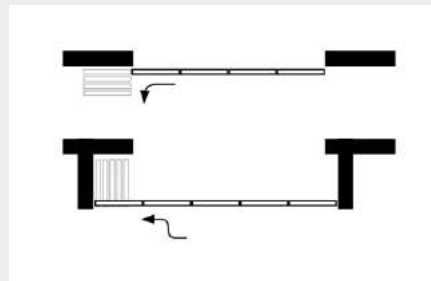
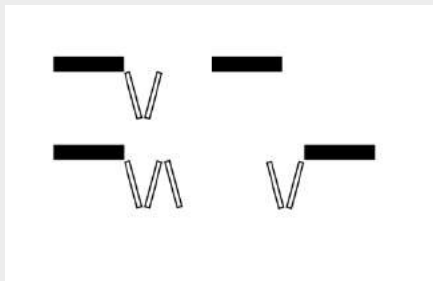
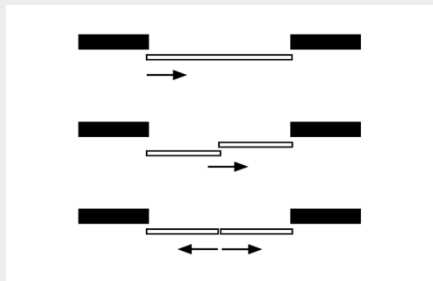
What area are you designing for?

Facade, Room, Furnishings and Shop fronts



Innovative sun protection for facade design

Hardware system for folding and sliding shutters. Manual and automatic.



Filigree cedar wood coat

Detached house, Starnberger See, DE



HAWA-Frontslide matic

Architect: Michael Schattan, 2013

Filigree cedar wood coat

Detached house, Starnberger See, DE



HAWA-Frontslide matic

Architect: Michael Schattan, 2013

One facade – many faces

Hotel La Maison Saarlouis, DE



HAWA-Frontego 30 matic

Architect: CBAG.studio, 2015

One facade – many faces

Hotel La Maison Saarlouis, DE



HAWA-Frontego 30 matic

Architects: CBAG.studio, 2015

Carbonized spruce dress

Residential Building Escherpark Zürich, CH

Rasmus Norlander



HAWA-Frontfold 20

Architect: E2A, 2007 - 2015

Carbonized spruce dress

Residential Building Escherpark Zürich, CH



HAWA-Frontfold 20

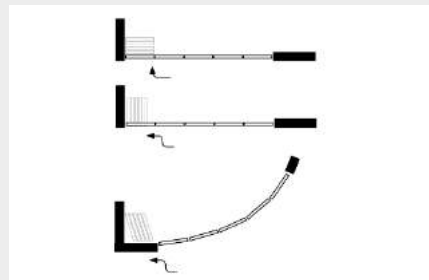
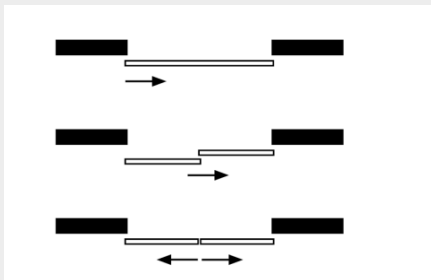
Architect: E2A, 2007 - 2015

Customized room solutions

Hardware systems for sliding doors and flexible partition walls



- Residential
- Hospitality
- Corporate



A sensitive connection to nature

Villa on the Lake Zug, CH



Dominique Marc Wehrli



HAWA-Junior 80 and 120 B integrated in the ceiling with HAWA-Adapto

Architects: Graber & Steiger, 2009

Privacy thanks to sliding solutions

Residential Building Zürich, CH



Hanspeter Wagner



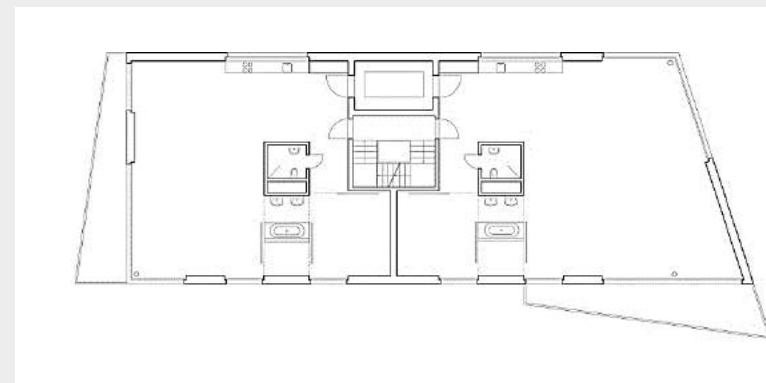
HAWA-Junior 120 B

Architect: Vera Gloor, 2006

Privacy thanks to sliding solutions

Residential Building Zürich, CH

Hanspeter Wagner



HAWA-Junior 120 B

Architect: Vera Gloor, 2006

Of alpine meadows, ice grottos and caves

Chalet Chantemerle, CH



Olivier Wavre

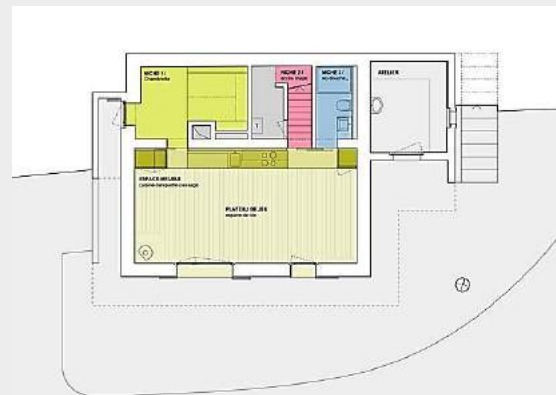


HAWA-Junior 80 B

Architects: strambinihussong sàrl, 2010

Of alpine meadows, ice grottos and caves

Chalet Chantemerle, CH



HAWA-Junior 80 B

Architects: strambinihussong sàrl, 2010

The world's tallest hotel

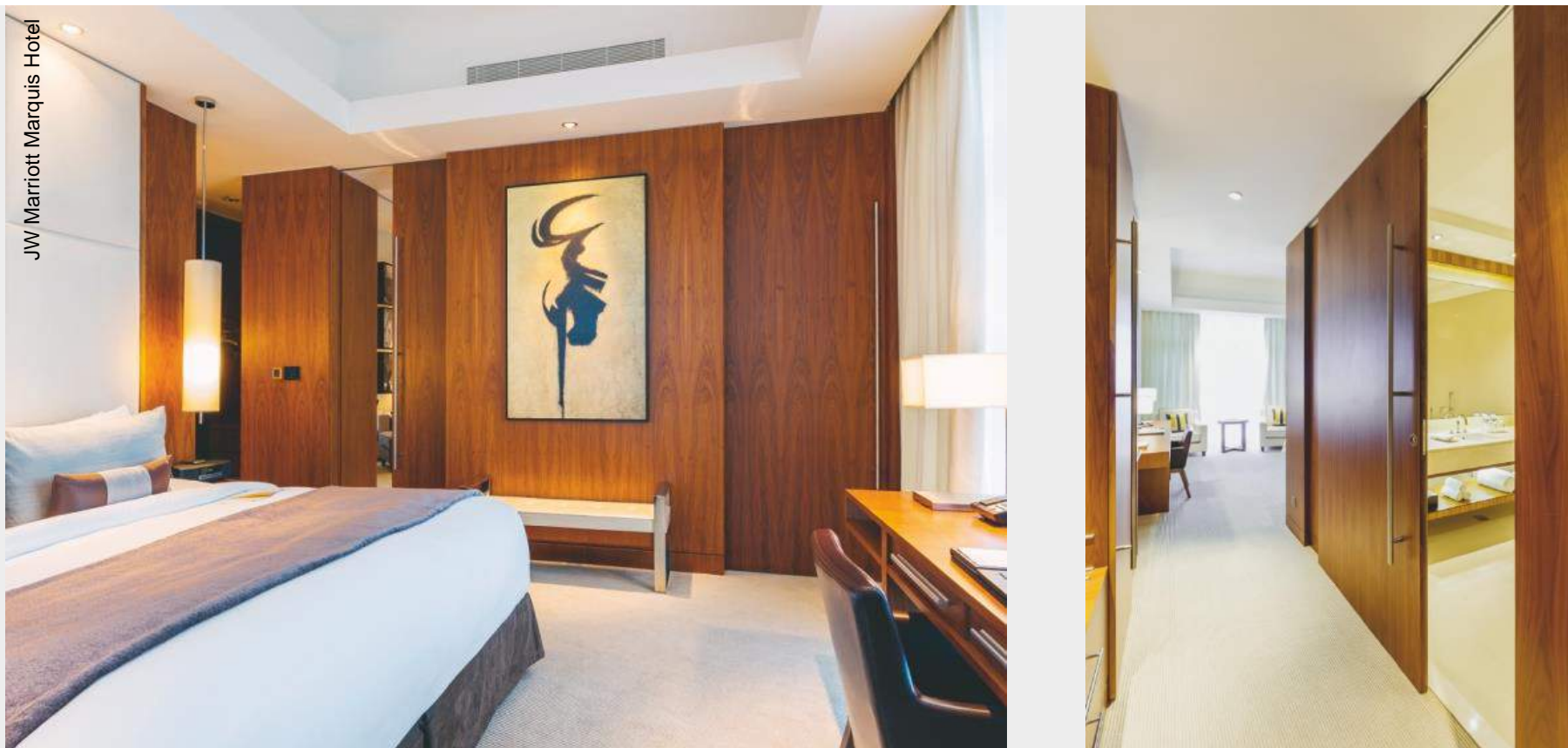
JW Marriott Marquis Hotel, UAE



HAWA-Junior 80 B and 120 B
Architects: Arch Group Consultants, 2013

The world's tallest hotel

JW Marriott Marquis Hotel, UAE



HAWA-Junior 80 B and 120 B
Architects: Arch Group Consultants, 2013

Intuitive personalised comfort

Hotel Hyatt Capital Gate, Abu Dhabi, UAE



EKU-PORTA 100 GWF

Architecture: RMJM (Robert Matthew, Johnson Marshall), 2011

Sliding on an advanced level

Vienna Twin Towers, Wien, AUT



EKU-PORTA 100 G

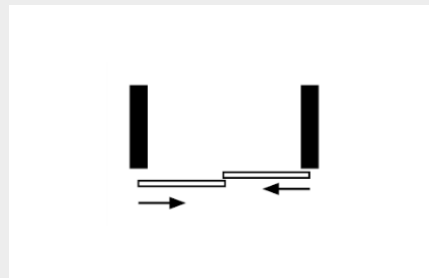
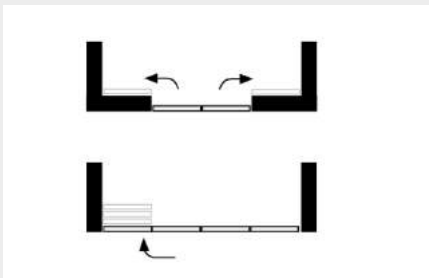
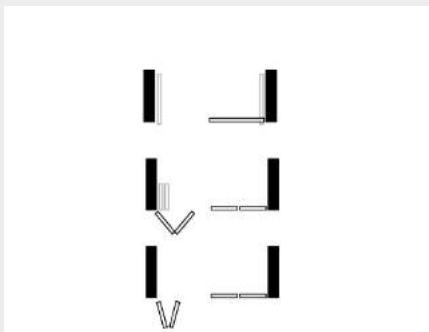
Architecture: Massimiliano Fuksas, 1999, Interior Design: Karl Langer Architekten, 2000

Smooth-running cabinet fronts

Hardware systems for cabinet doors that slide, fold, stack & pivot / slide-in



- Modern kitchens
- Organized offices
- Tidy cloakrooms



White understatement

Detached house Oberägeri, CH

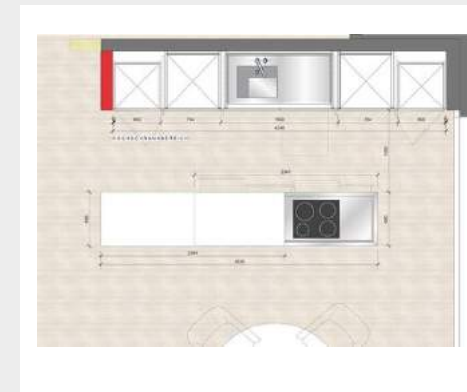


HAWA-Concepta 50

Interior Design: Katharina Bütler, Boffi Zürich, 2014

White understatement

Detached house Oberägeri, CH



HAWA-Concepta 50

Interior Design: Katharina Bütler, Boffi Zürich, 2014

Kitchen hideaway

Apartment Berlin Kreuzberg, DE



HAWA-Concepta 50

Architecture / Interior Design: dAX_I, 2013

Kitchen hideaway

Apartment Berlin Kreuzberg, DE



HAWA-Concepta 50

Architecture / Interior Design: dAX_I, 2013

Silver medal - Swiss Kitchen Award

Späti Innenausbau AG, Bellach, CH



EKU-CLIPO 16 GK IS

Design: atelier oï, 2015

Modern pavillon

LOFT 24/7, São Paulo, BRA



EKU-REGAL B 25 X-H FS

Architecture: Fernanda Marques, São Paulo, 2012

Designoriented sleeping and living

Wackenhut, Altensteig-Überberg, DE



EKU-FRONTINO 20

Design: Panthe-Wackenhut GmbH & Co. KG, 2013

Clear design language

Leuwico GmbH, Wiesenfeld, DE



EKU-CLIPO 26I36

Interior Design: Leuwico GmbH

Future offices

LISTA OFFICE LO, Degersheim, CH



EKU AG, Sirmach, CH



EKU-CLIPO 16 H IS

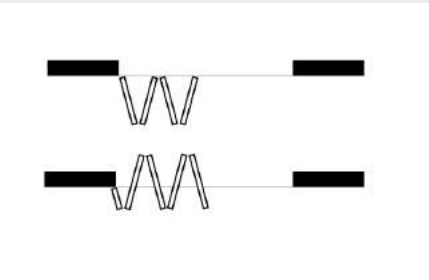
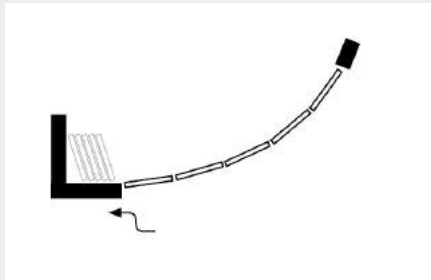
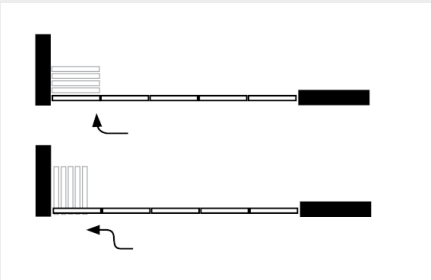
Interior Design: greutmann bolzern ag Zürich

Transparent solutions

Hardware systems for glass partition walls



- Shopping malls
- Airports
- Offices
- Banks



Light and airy shopping egg

Shopping center Centro Ovale Chiasso, CH



HAWA-Variotec 150 GV

Architecture: Ostinelli & Partners, 2011

Unobstructed outside view

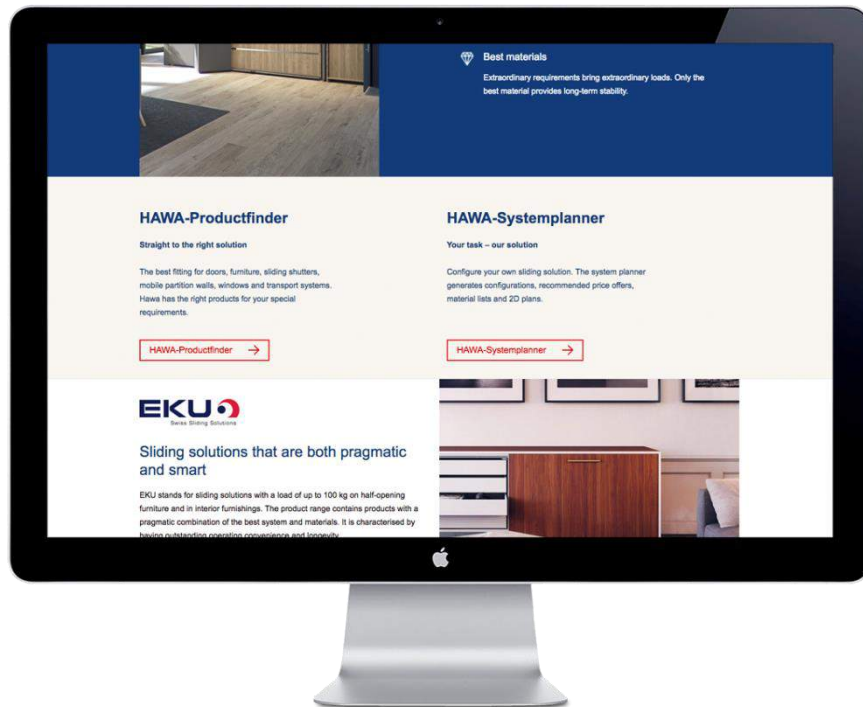
Shopping center Archhöfe Winterthur, CH



HAWA-Variotec 150 GV

Architecture: BDE Architekten, 2013

Designing with HAWA sliding hardware systems



- Online help:
 - Find the right product
 - HAWA-Productfinder**
 - EKU-Product world**
 - EKU-Productfinder**
 - Practical planning help
 - HAWA-Systemplanner**
 - EKU-Productplanner**
 - BIMobject**
- Technical advice
- Project advice on site
- Installer network
- Customized solutions

Together we make new spaces possible

