

New

Assembly set for wall pocket solution
Soft closing mechanism SoftMove

Available from summer 2018



Accessories for system optimization

HAWA-Junior 40/80/120

Subject to technical modifications. 26176/02/18/English © 2018 Hawa Sliding Solutions AG



Further information:

Hawa Sliding Solutions AG
8932 Mettmenstetten
Switzerland
Tel. +41 44 787 17 17
Fax +41 44 787 17 18
www.hawa.com



Sale by specialized dealers

Patents

Proven a million times, systematically perfected

HAWA-Junior 40/80/120

The inspiring sliding solution for wooden, glass, and metal doors

Wherever people want to move sliding doors made of wood, glass or metal in almost every weight category comfortably, safely and reliably, the hardware system HAWA-Junior has been there for over three decades. As a comprehensive sliding solution for a wide range of applications, it has by now proven itself millions of times all over the world. There are good reasons for this: manufacturing quality on a high Swiss standard, flexibility, long service life, and reliability, virtually noiseless running as well as the impressive ease of use and installation, just to name a few.

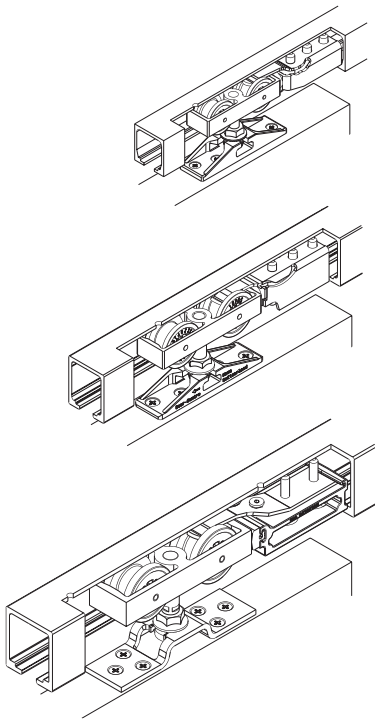
And this sliding door fitting has never stopped moving. On the contrary: With a variety of suspensions and guiding options, clever supplementary parts and plenty of accessories, the HAWA-Junior family presents itself today as younger, more dynamic, and more active than ever.




Robustness and elegance are not mutually exclusive: Metal sliding doors.



Transparency is welcome in architecture as well: Glass sliding doors.

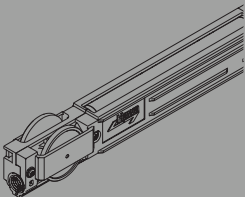


 HAWA-Junior 40
up to 40 kg

 HAWA-Junior 80
up to 80 kg

 HAWA-Junior 120
up to 120 kg

Modern interpretations of the most traditional building material: Wooden sliding doors.



SoftMove soft closing mechanism: Convenience without limits.
The latest accessory for the HAWA-Junior collection makes sliding doors even quieter and easier to use.

For increased efficiency and productivity with wall pocket solutions

Assembly set for HAWA-Junior 40/80/120 running tracks



At a glance

- For integrated ceiling mounting, surface-mounted ceiling installation and wall surface mounting.
- Especially quiet running, as the separation layer between the running track and retainer profile reduces the transmission of vibration and structure-borne noise.
- No dirtying of the running track during the construction phase thanks to a high degree of pre-assembly.
- Attractive design with invisibly mounted panels.
- Retrofitting and replacement of components possible at any time.

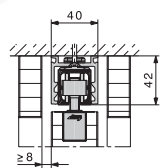
Technical specifications	
Max. door weight	40 kg
Door width	700-1250 mm
Door thickness	up to 50 mm
Height adjustable	± 3 mm
Horizontal adjustment range in the bayonet	± 8 mm

Max. door weight	80 kg
Door width	700-1500 mm
Door thickness	up to 50 mm
Height adjustable	± 3 mm
Horizontal adjustment range in the bayonet	± 8 mm

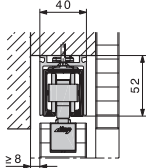
Max. door weight	120 kg
Door width	700-1500 mm
Door thickness	up to 50 mm
Height adjustable	± 3 mm
Horizontal adjustment range in the bayonet	± 8 mm

Description

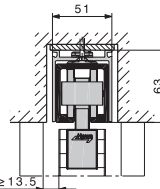
With this new addition, using the HAWA-Junior 40/80/120 becomes even more efficient. Especially with the increasingly popular wall pocket solutions, this well thought-out assembly set packs a punch. Thanks to a pre-assembled retainer profile, the running track can be assembled and disassembled at any time via rattle-proof bayonet locks. All components remain freely accessible and can be easily replaced or extended. Pre-assembly prevents running tracks and running surfaces from becoming dirty during the construction phase. And all that technical sophistication is not at the expense of aesthetics: With integrated door ejector and clip-on lintel panelling, all fitting components remain invisible.



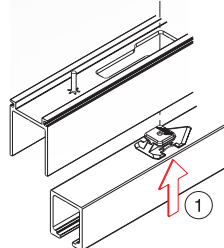
Ceiling mounting.



Wall surface mounting.

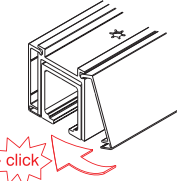
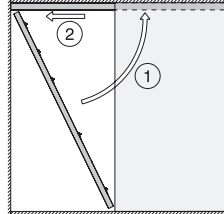


Integrated in ceiling.



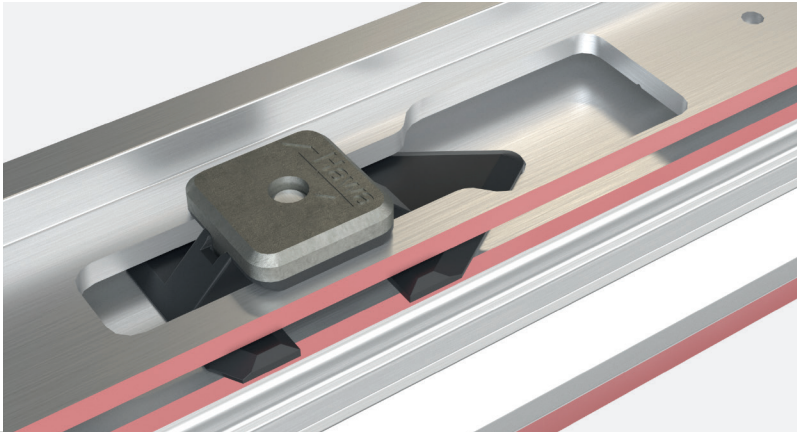
Flexibility and planning certainty

Components in the track can be replaced at any time or added to as required at any time, even with permanently installed wall pockets.



Excellent aesthetics

Using the clip panel, lintel panelling, up to a material thickness of 40 mm, can be invisibly fastened.



Do you wish to experience the assembly set for the HAWA-Junior 40/80/120 running tracks live? Further information at www.hawa.ch > HAWA-Productfinder

For gentle braking and self-closing

SoftMove soft closing mechanism for HAWA-Junior 40/80/120

At a glance

- For wooden, glass and metal sliding doors up to 40, 80 and 120 kg.
- Allows for gentle, even damping with controlled retention of the door.
- Simple planning and quick, trouble-free installation.
- Superior convenience and effective noise reduction through hydraulic damping.
- Durable maintenance-free system with dimensionally stable materials.
- Technology integrated invisible in the track.

Mounted in a flash, connected dimensionally stable

Suspend and, depending on the version, quickly screw it on – and the positive-fit is complete. The design prevents the soft closing mechanism from ever jamming.

Description

Matching the quiet, smooth running of the HAWA-Junior 40/80/120 fittings: the new SoftMove 40/80/120 soft closing mechanism. Hydraulically damped, it gently stops sliding doors made of wood, glass, and metal and autonomously and quietly pulls them to the stop.

Installation is as convenient and efficient as operation: thanks to the positive-fit screw connection on the running gear. Since the entire technology is invisibly integrated in the track, the SoftMove 40/80/120 is a pleasure on the eye as well. And the enjoyment is there to stay. That is guaranteed by high quality and maintenance-free quality workmanship.

